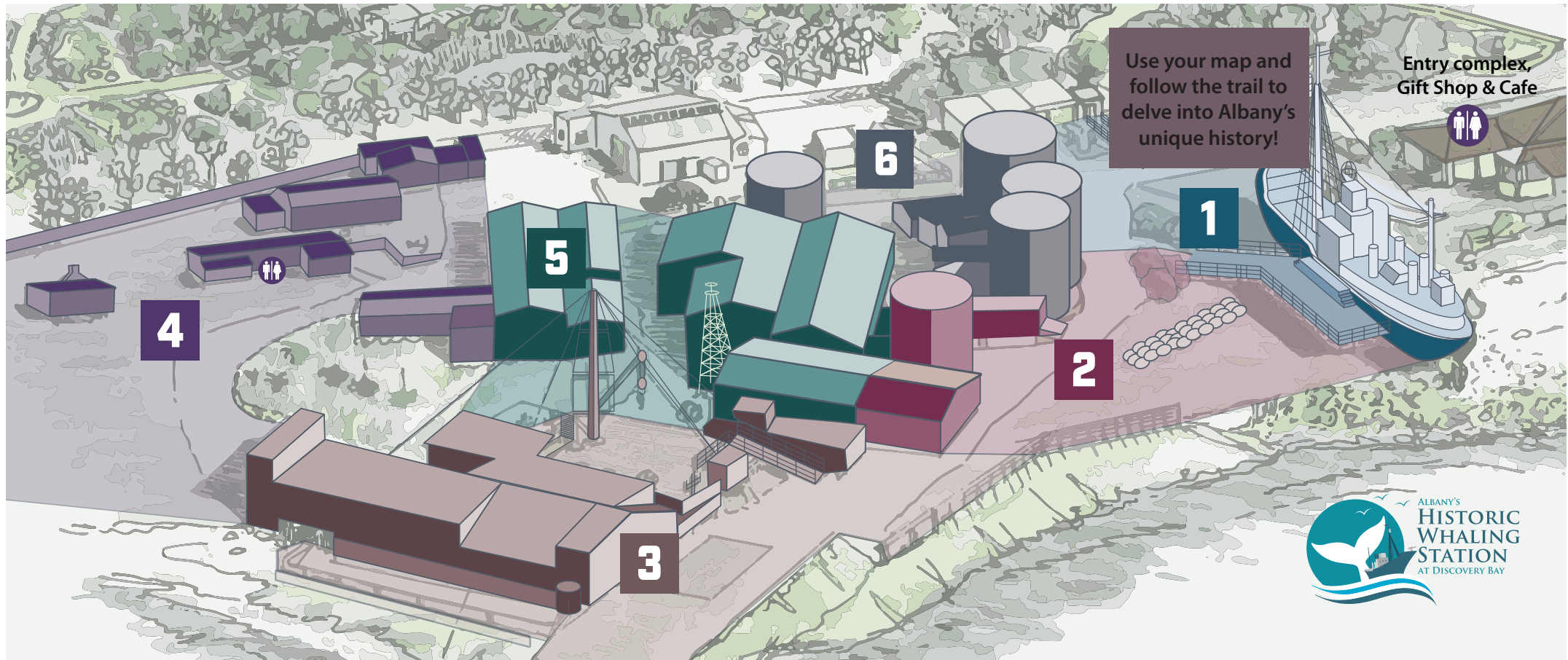


HISTORIC WHALING STATION GUIDE



1

**CHEYNES IV
WHALE CHASER**



CLIMB ABOARD AND
EXPLORE

2

**WHALING
COMPANY
HISTORY**



UNDERSTAND OUR
DIVERSE PAST

3

**PROCESSING
THE WHALES**



ORIGINAL FACTORY AND
EQUIPMENT

4

**FACTORY MESS
AND COMPANY
OFFICES**



CHART ROOM AND
MCBRIDE HUT

5

**WHALE
SKELETONS AND
ARTEFACTS**



GIANTS OF THE SEA
EXHIBIT

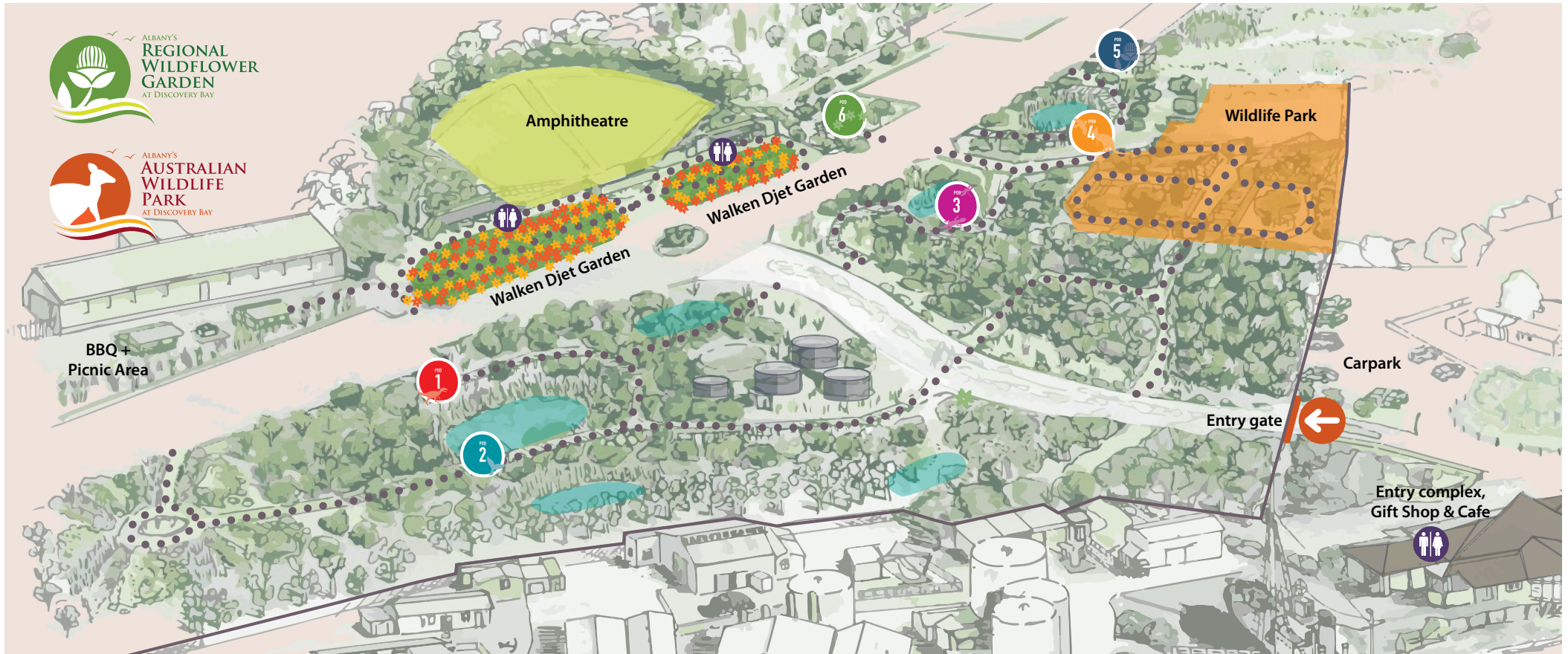
6

**OIL TANK
THEATRES**



ENJOY OUR CINEMATIC
PRESENTATIONS

REGIONAL WILDFLOWER GARDEN & AUSTRALIAN WILDLIFE PARK GUIDE



Discovery Trail Information Pods

Gondwana, Geology,
Biodiversity & Hotspots



History of the Settlers
& Our Whales



Wetlands &
Adaptation of Species



Australian Wildlife
Information



Future Development



Walken Djet
(Rainbow Flower)



To access our Garden & Wildlife Park,
please exit Whaling Station entry complex and walk to the orange gate in carpark.
Enter code listed to unlock gate.

The main garden, Walken Djet, has 8000 plants, carefully chosen to represent the unique biodiversity of our South West region.

Separate sections have been designed within the garden featuring 50 species, including rare and endangered plants, found within the four coastal regions of Albany, Bremer Bay, Ravensthorpe and Esperance.

Entry Gate Code: